



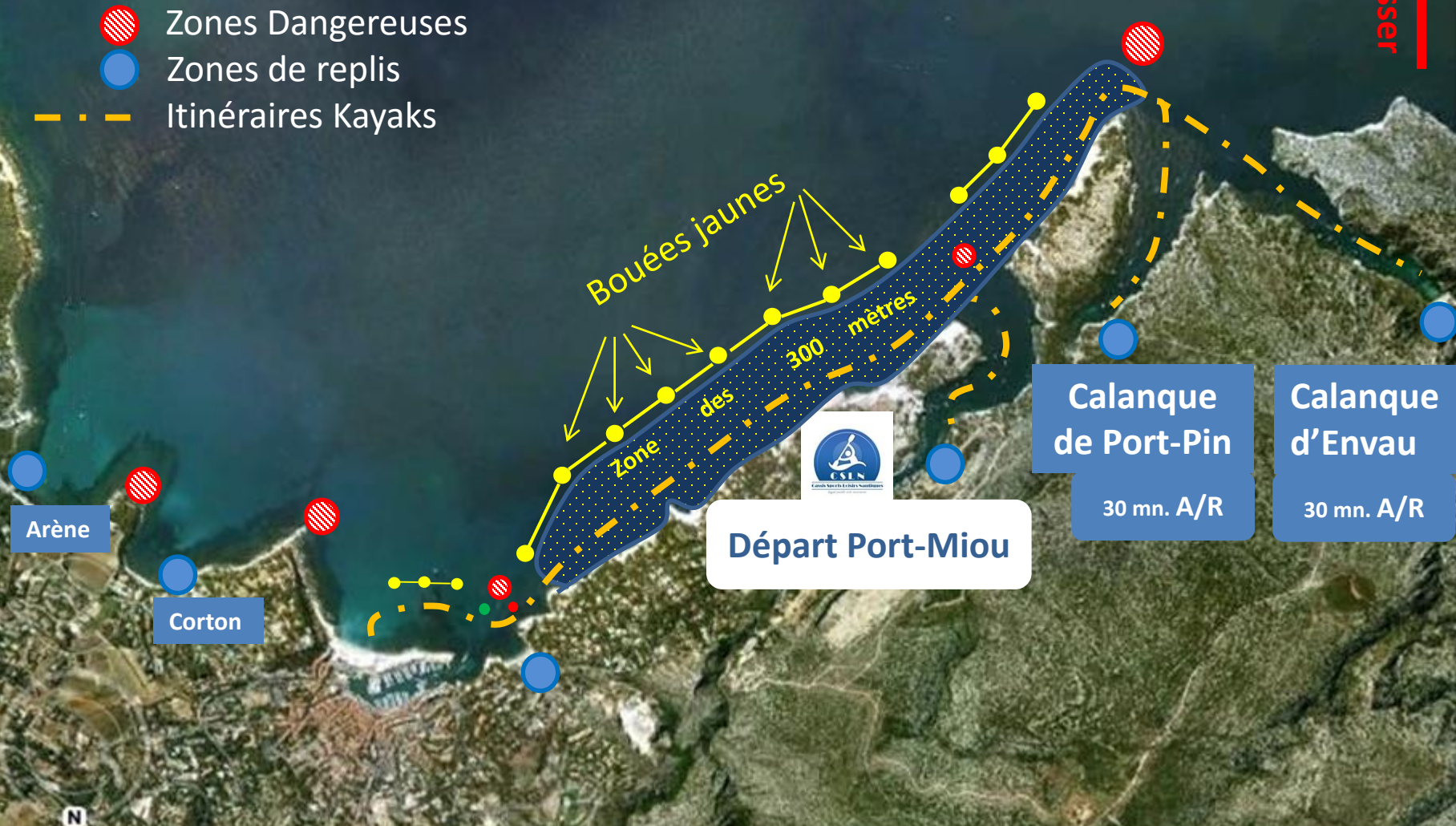


# ITINERAIRES ET ZONE DE NAVIGATION

Les Kayaks doivent naviguer dans la zone des 300 mètres

-  Zone des 300 mètres
-  Zones Dangereuses
-  Zones de replis
-  Itinéraires Kayaks



Ne pas dépasser

Arène

Corton

Départ Port-Miou

Calanque de Port-Pin  
30 mn. A/R

Calanque d'Envau  
30 mn. A/R

N